



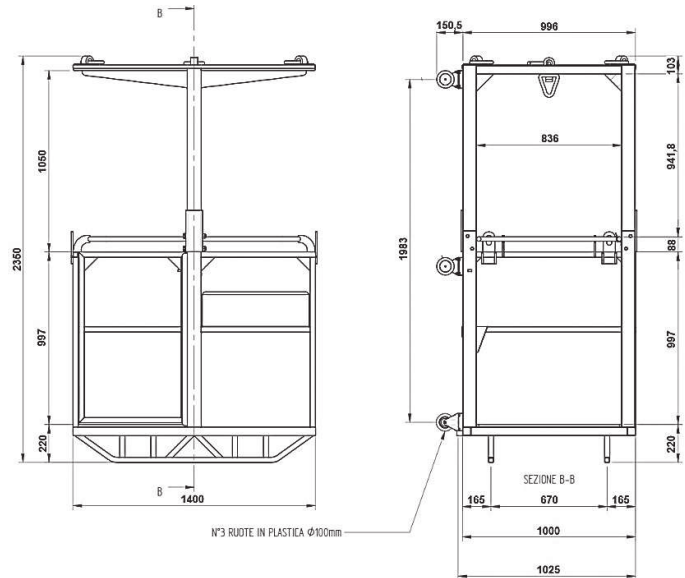
Riippukori  
torninosturiin\*

\* Korin katto poistettavissa



<b>FTB 2 500</b>	1000x1400x2200 mm	350 kg	300 kg	2
------------------	-------------------	--------	--------	---

EN 14502-1-2010:n mukainen



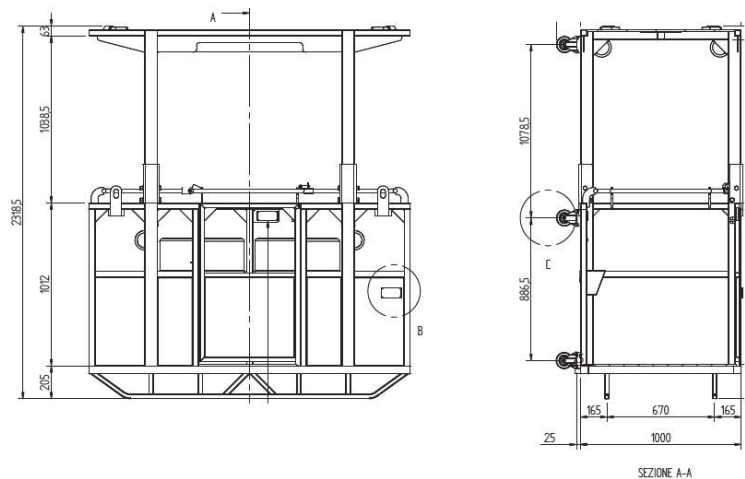
Riippukori  
torninosturiin\*

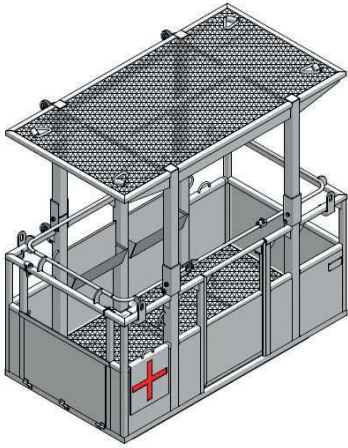
\* Korin katto poistettavissa



<b>FTB 3 550</b>	1000x1600x2300 mm	495 kg	450 kg	3
------------------	-------------------	--------	--------	---

EN 14502-1-2010:n mukainen





**Pelastuskori -**  
riippukori torninosturiin\*

\* Korin katto poistettavissa



**FTB 4 650 RESCUE**

1350x2250x2300 mm

574 Kg

615 Kg

4

EN 14502-1-2010:n mukainen

